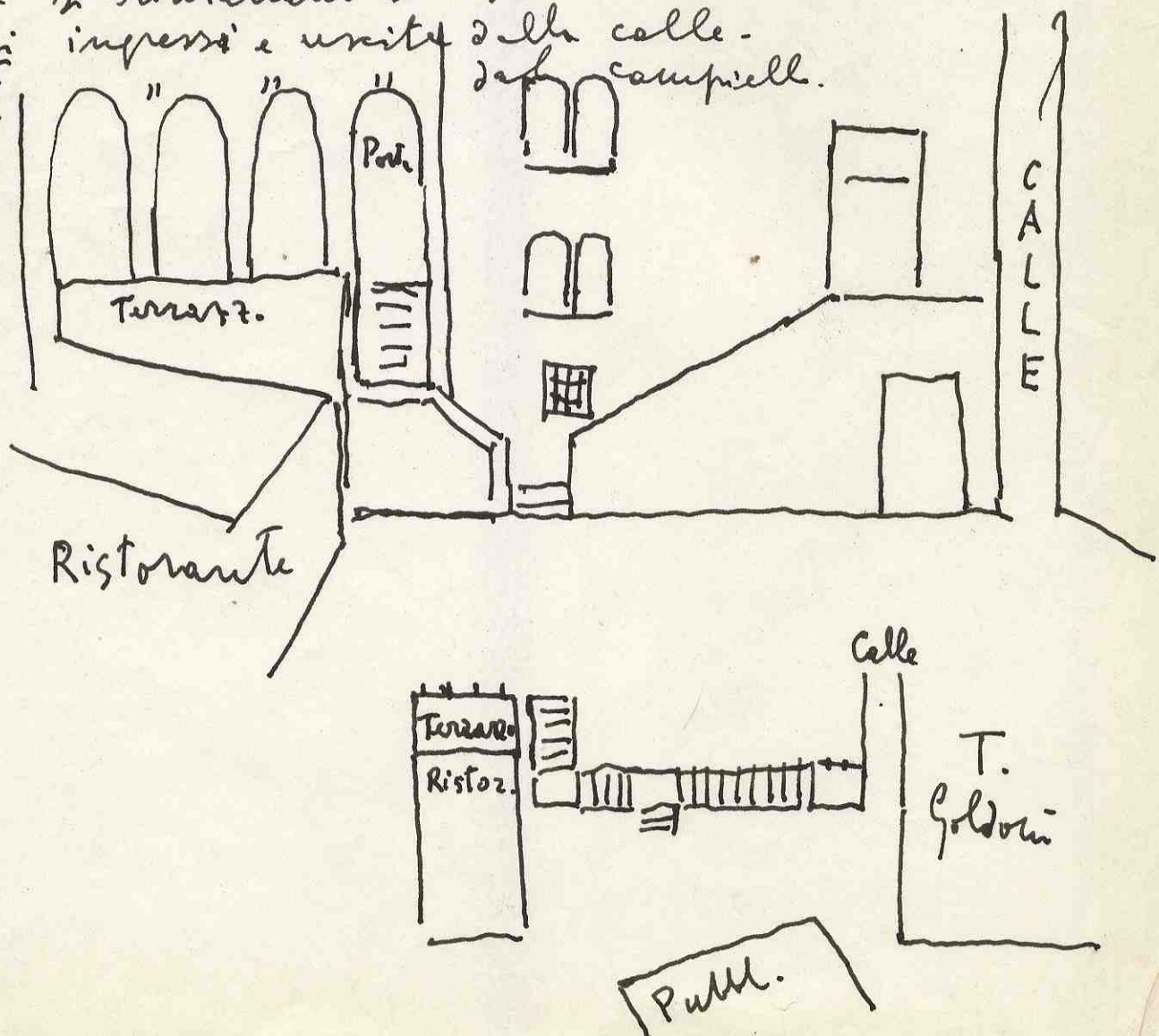


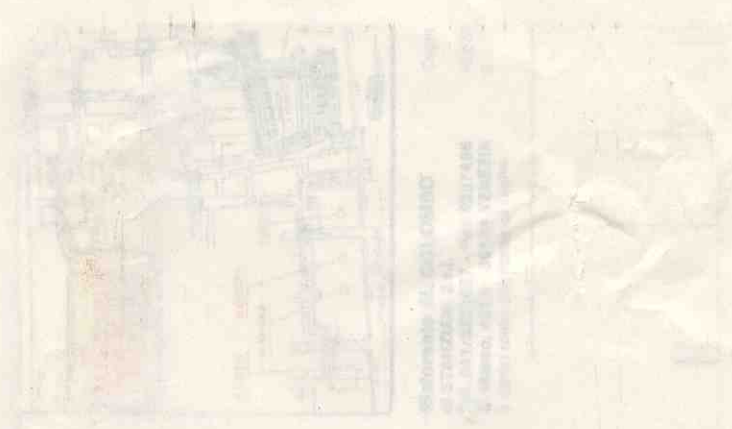
Regia per Il Campiello di C. G. (1)
 nel Campiello del Teatro Goldoni



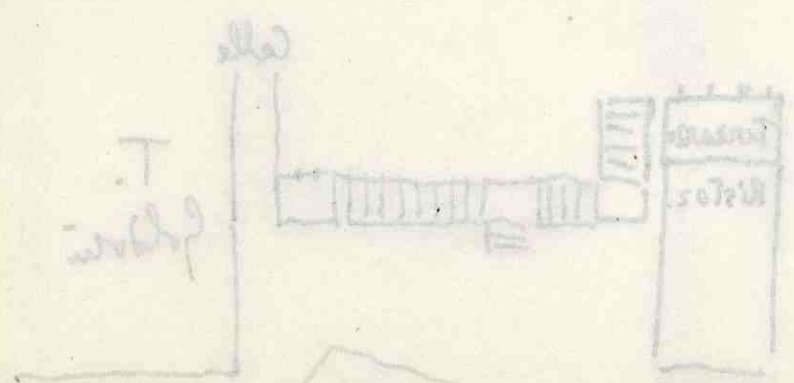
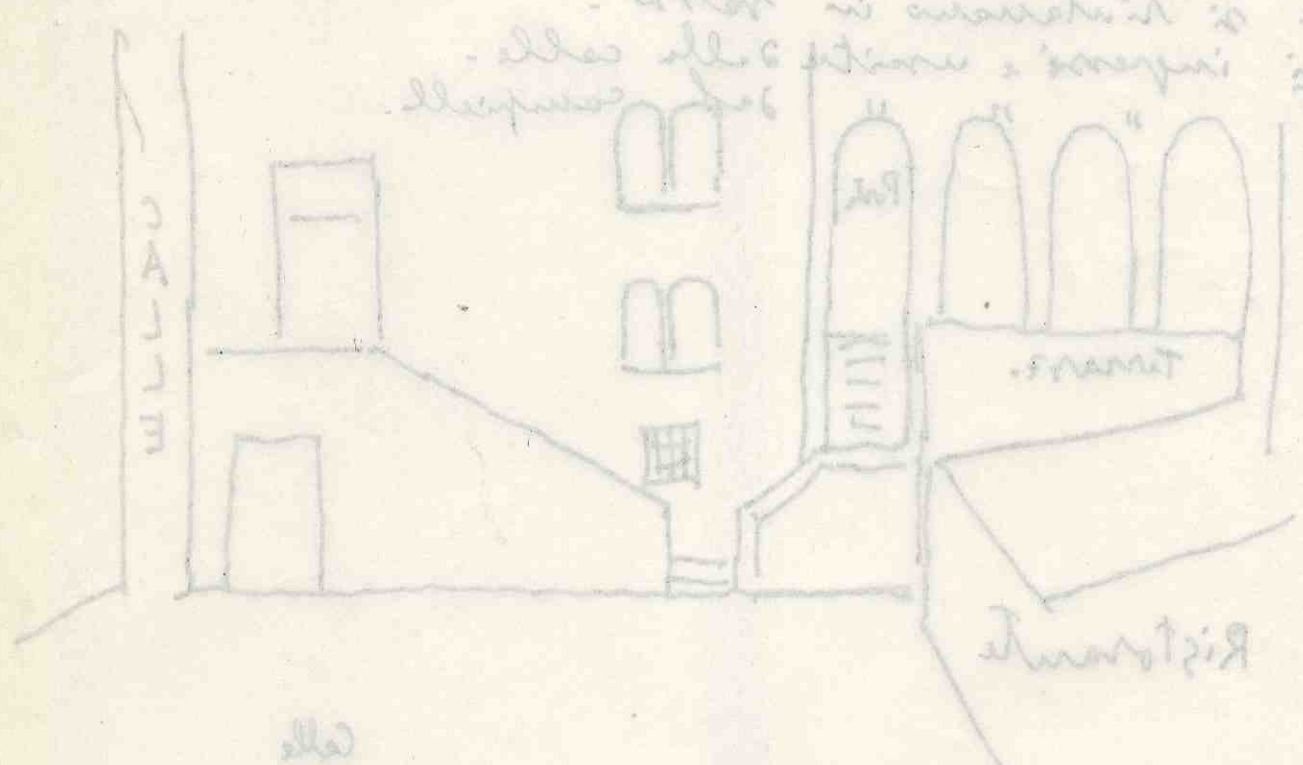
Councili generali: impossibili per tutti logici.
 Scelta 'poetica': giardini coronati in alto-
 Verchie si riantano in basso.
 Topolani impressi e unite della calle.
 Borghesi dal campicello.



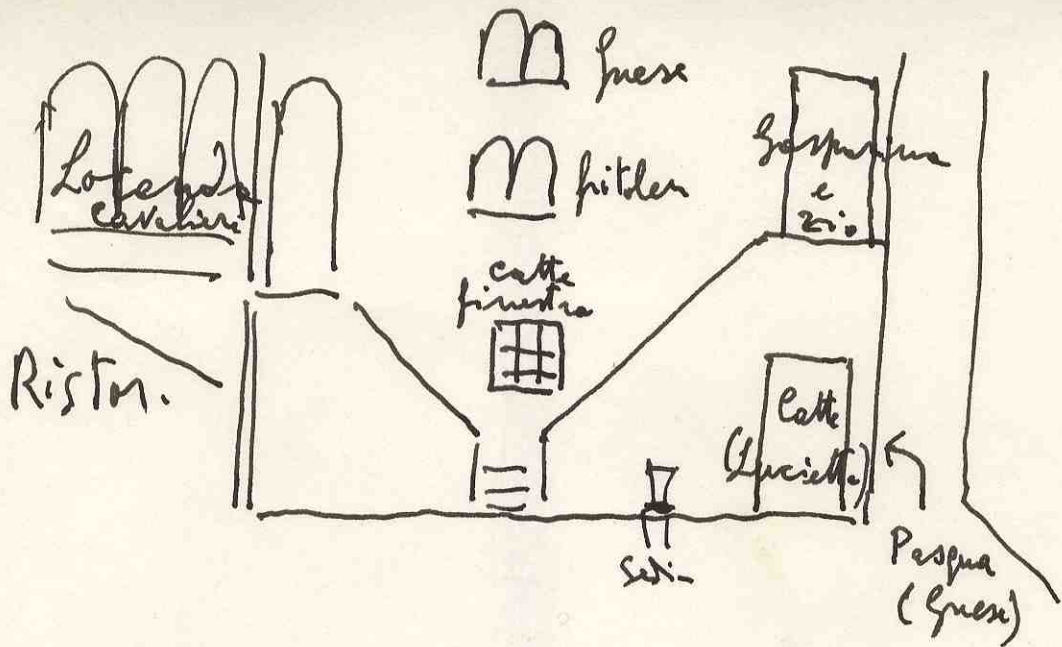
Rep. in the Congress of the U.S.
 and Congress shall not take place



General: impossible for...
 ...
 ...
 ...
 ...
 ...



...



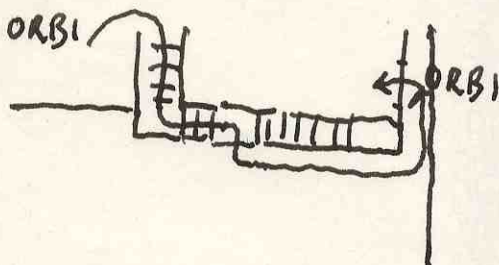
~~XXXXXXXXXXXX~~

Luci Zio

N.B. Si può saltare e iniziare con CAMPANE

Suoni, chiasso nella Locand. (Terrazzo)
 (attori disponibili che non devono entrare in scena da altre parti):
 ORBI, Cavalieri, Sensory, Lucietta,
 Guese, Orsola)

Escono pl. ORBI (battito del bastone)

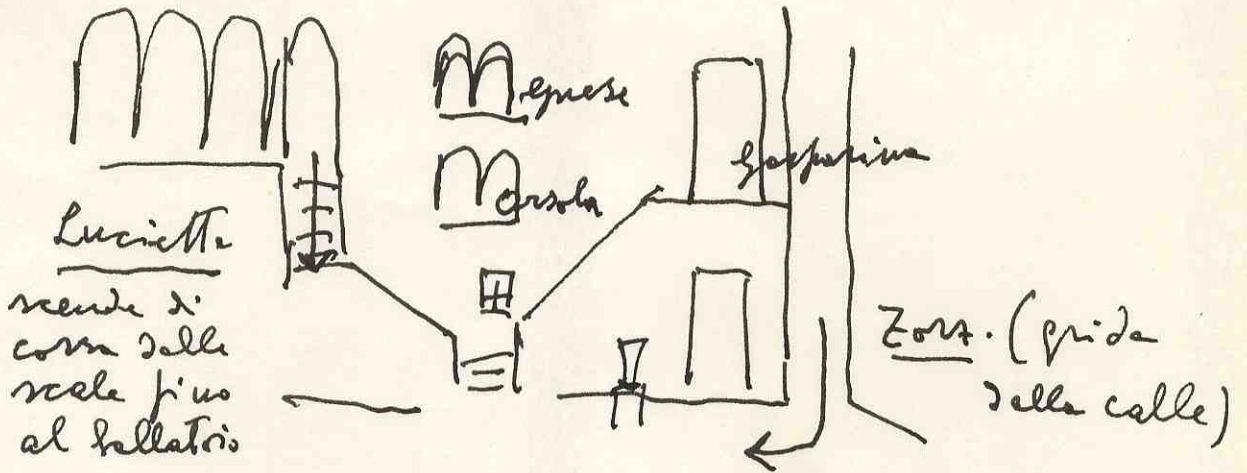


CAMPANE
 Luce Methis

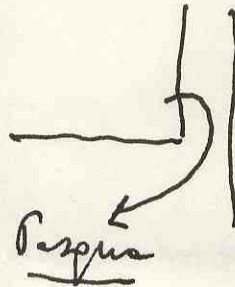
Si ←

p. 11-19

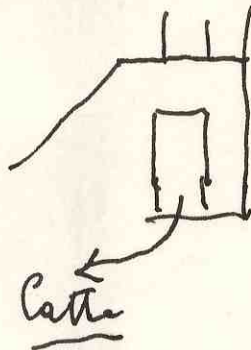
p. 11



p. 12

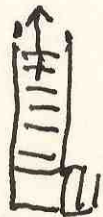


p. 13

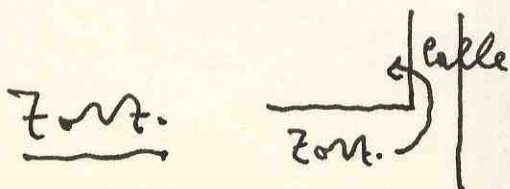


p. 14 Zora. esce la palla e la mostra a Guere

p. 18 Lucietta 'entra in casa': invece
 rigale di
 corsa
 la scale
 ed entra dalla porta



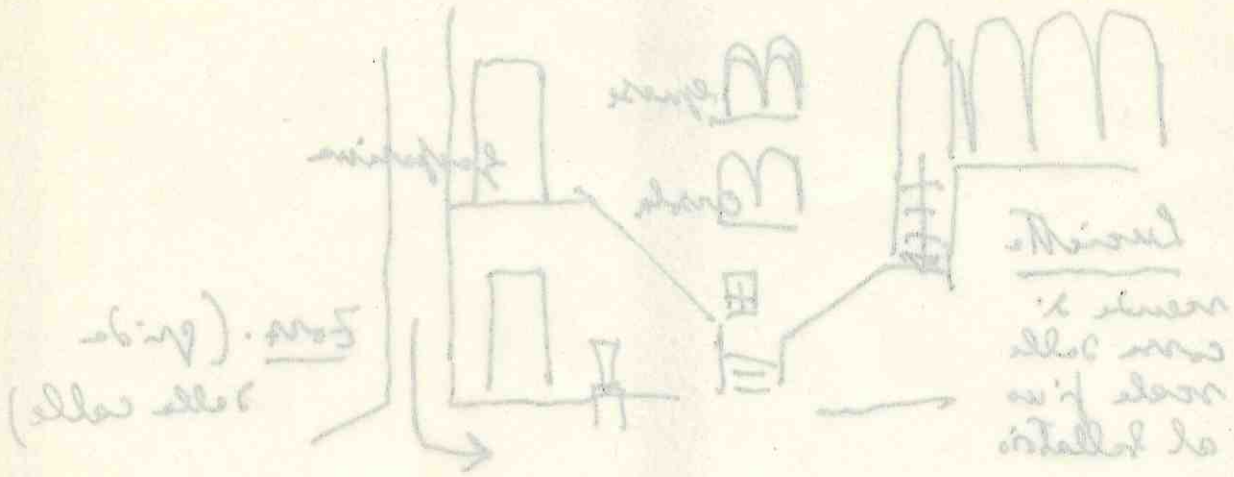
p. 19



3)

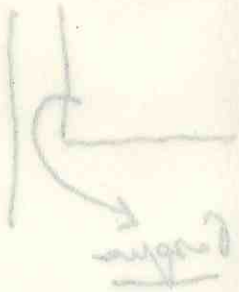
ATA I, 1. 1/10

11-11-19



p. 11

Entrada
Cuarto
Banco
Escalera



p. 15



p. 13

Entrada. sobre la puerta a la izquierda y a la derecha

p. 12



Entrada 'entre in casa' : interior
de la casa
de la casa
de la casa

p. 18



Entrada

p. 19

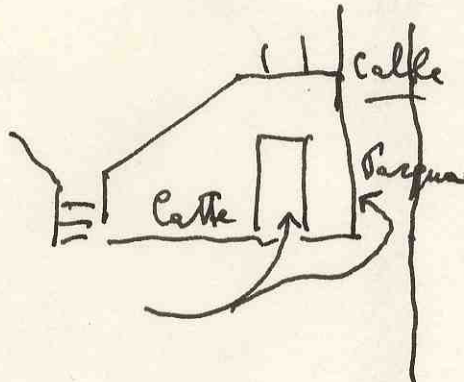
Att. I, 2

(4)

p. 23

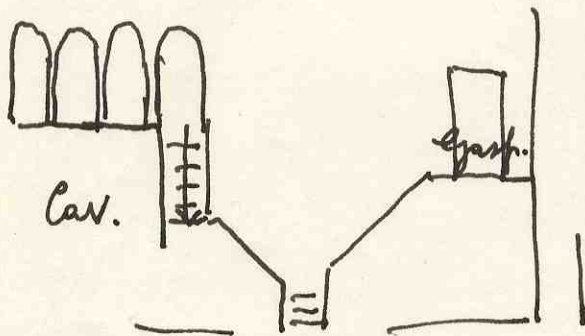
Cathe e Pesqua entrano in casa

(potrebbero alla fine della scena ballare ed entrare a braccetto.)

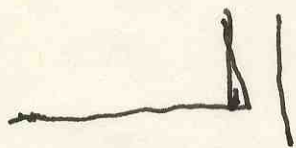


Att. I, 3

p. 23

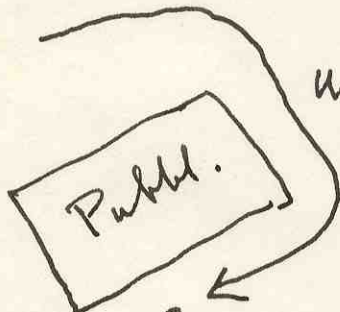


Quand. Gasp. dice 'Oh, vedo qua...!' il Cav. si tocca di fronte e Gasp. sul pianerottol della scala



Musica dalla Calle

Orbi restano nella terrazza?



Uscite Cav.

(reste in attesa del rientro in scena)

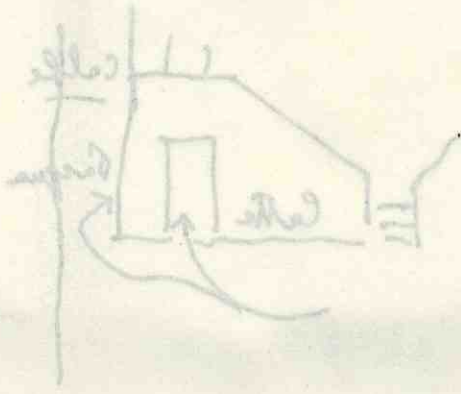
(2)

Att. I, 2

Water & sewage entrance in case

p. 23

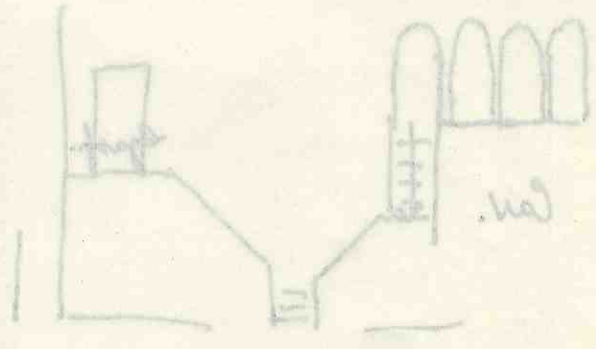
(position of the five ball valves
relative to entrance & sewerage)



Att. I, 3

p. 23

Water. Sewage. Ball valves
 in case of fire
 a ball valve and fire extinguisher



Water
 Sewage

Ball valves
 fire extinguisher

Water. Sewage.

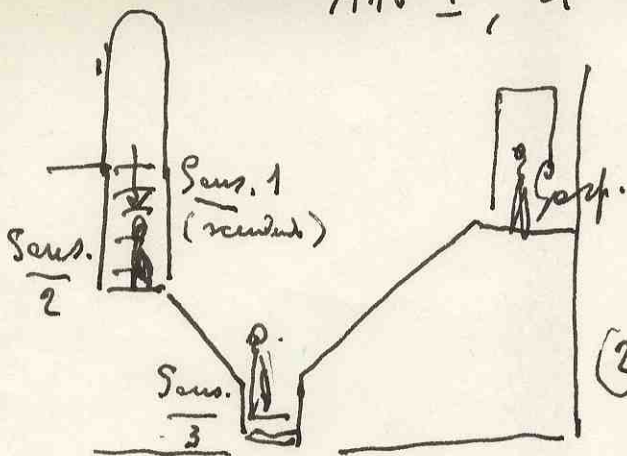


(note in other set
 relative to entrance)

Att. I, 4

(5)

p. 26

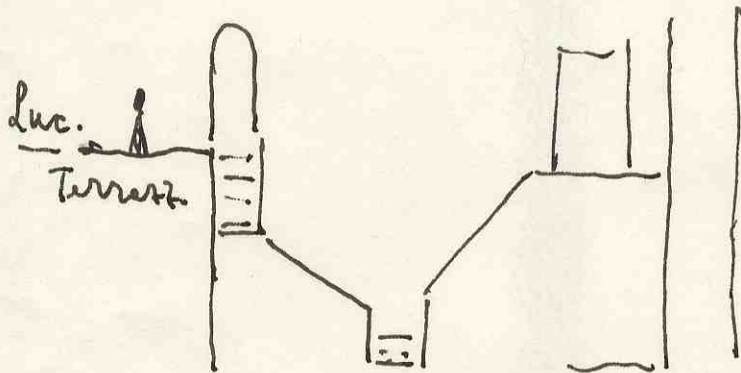


Sans. 1^o dalla
 mensa (1) mentre
 scende
 sala

- (2) 'Pahome rivista' sul
 2^o pianerottolo
- (3) 'No che xe mal' scende
 sul 1^o pianerottolo
- (4) 3/4 esce risalew.

Att. I, 5

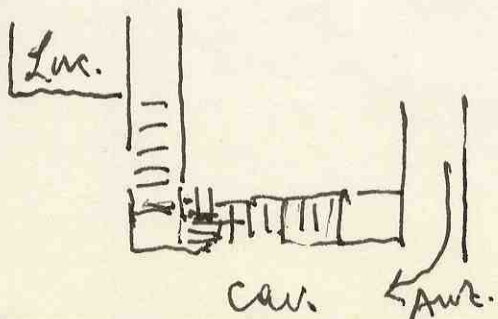
p. 26



Att. I, 6

Att. I, 7

p. 27



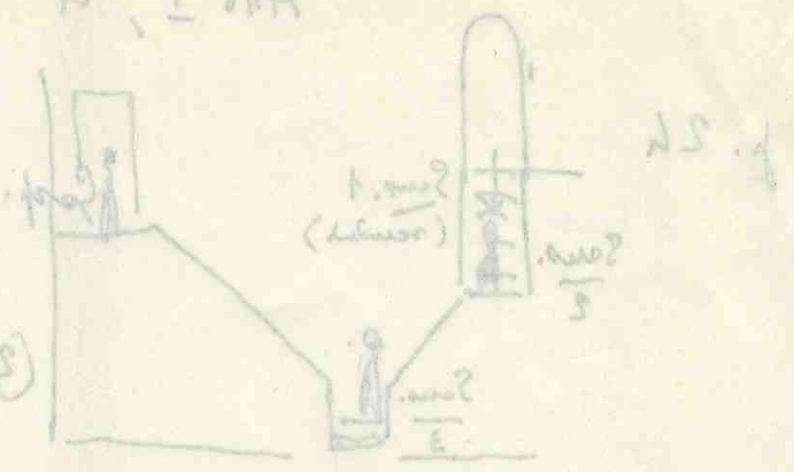
p. 28



(2)

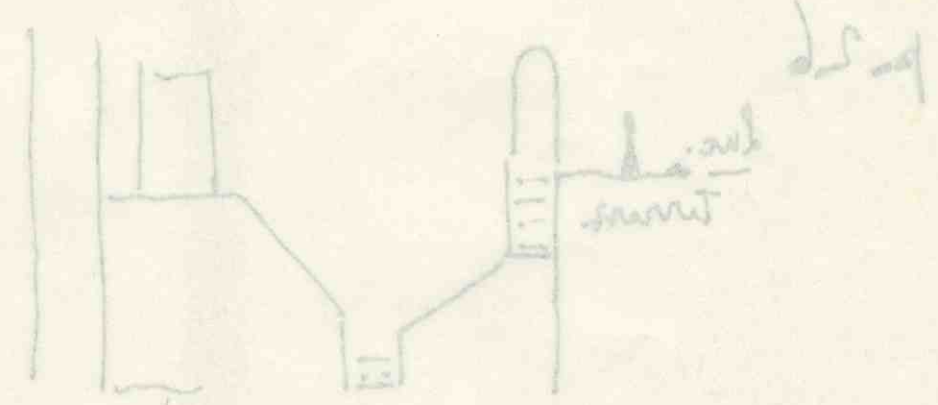
Att. I. A

Handwritten notes in the top left corner, possibly describing a process or material.



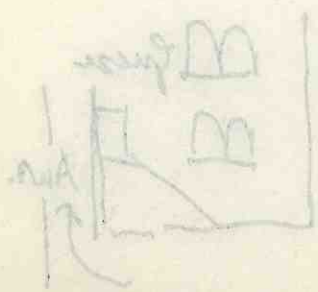
- (1) 'Diam. or vent' and 'to fine particles'
- (2) 'to the fine particles' and 'to the fine particles'
- (3) 'to the fine particles' and 'to the fine particles'
- (4) 'to the fine particles' and 'to the fine particles'

Att. I. A

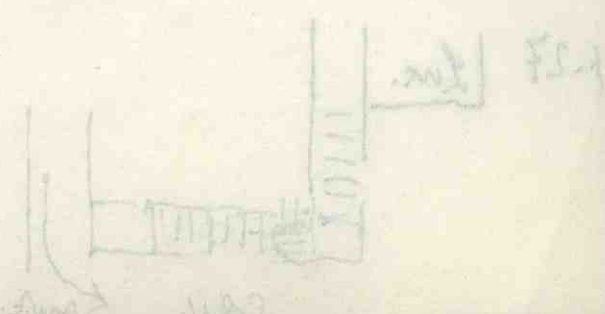


Att. I. A

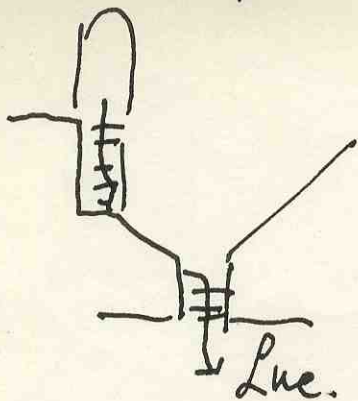
Att. I. A



p. 58

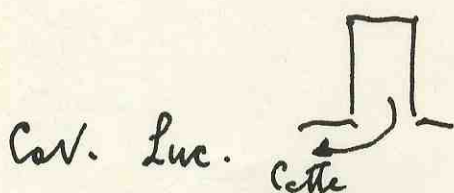


p. 29



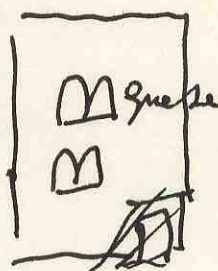
I, 9, 10

p. 30



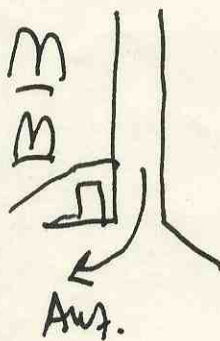
p. 31

I, 11

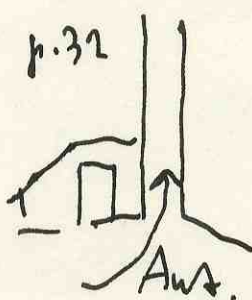


Att I, 12

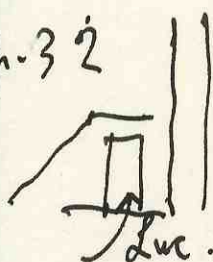
p. 32



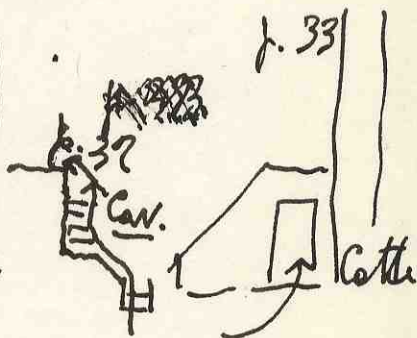
p. 32



p. 32



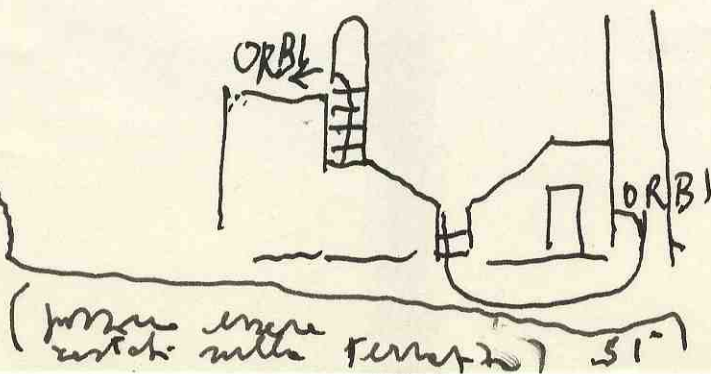
p. 33



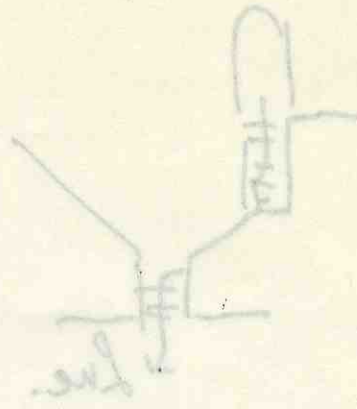
pp. 33-34 ^{saltare} fra il I e il II att.

CAMPANE

~~saltare~~
 ORBI
 dello colle
 verso nella
 locande

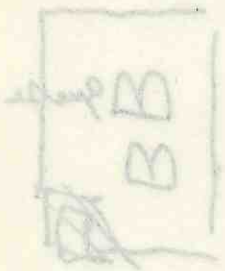


Att. I, 8



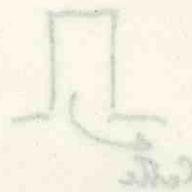
f. 31

Att. I, 11



f. 31

Att. I, 10



f. 31

Car. line. etc.

Att. I, 15



f. 31



f. 31



f. 31

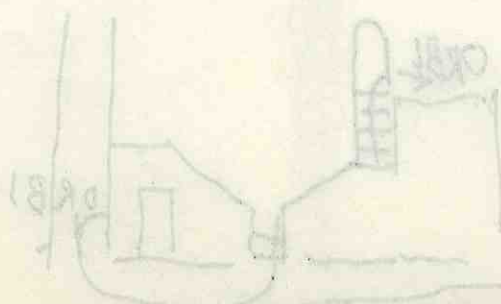


f. 31

CAMPARE

Att. I, 16

f. 31-32



f. 31

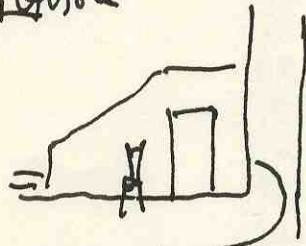
Other
OR 81
Cable cable
Various with
to change

(From more
with f. 31)

p. 34

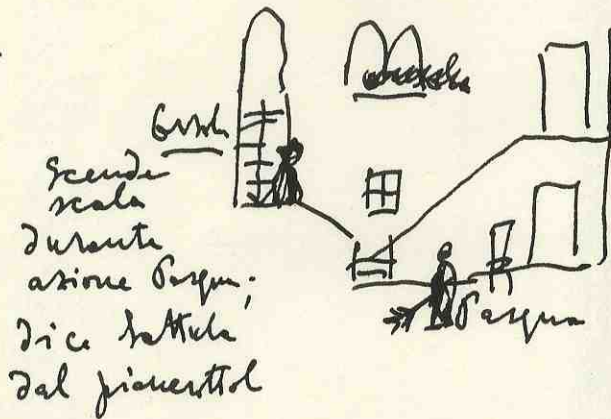
Atto II, 1

Consola



Parqua (scope)

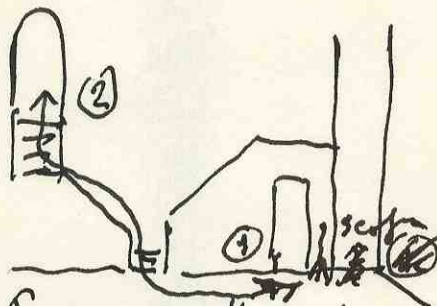
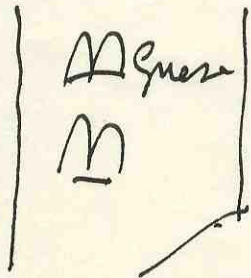
p. 35



Scende
scala
durante
azione Parqua;
dice battute
dal pianerottol

Atto II, 2

p. 37



- ① Parqua, mette scope
~~nella scala~~ accanto a port. Cella;
- ② sale scala

(la scope resta in
scena per necessità
tempor.)

F)

ATT. II
M
M

1. 31



→ (200ft)



1. 32

ATT. II, 5

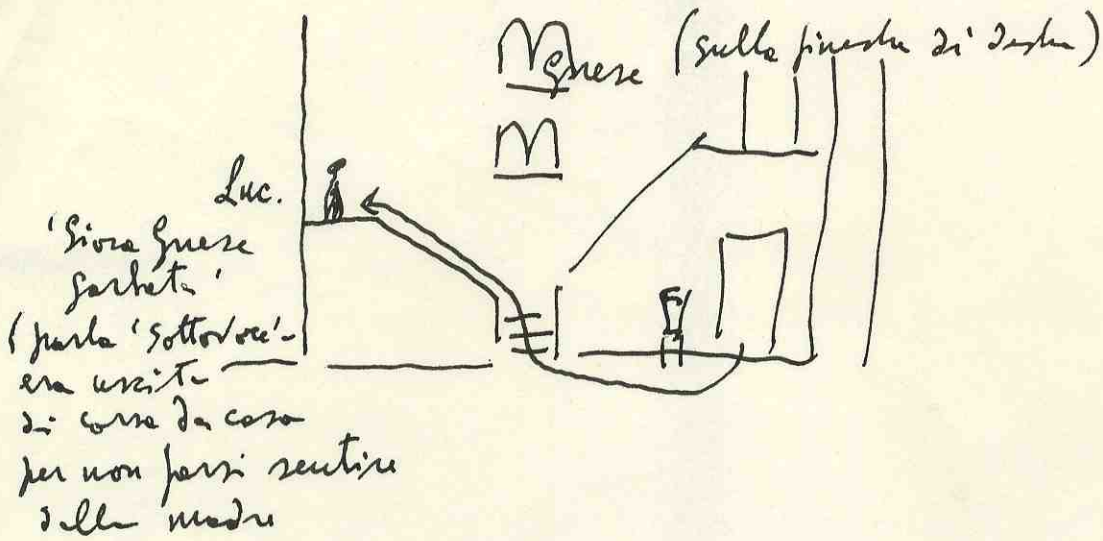


1. 33

- ① bol scale
- ② bol scale
- ③ bol scale

(bol scale is
 same for
 (bol scale))

p. 39



p. 40

~~ATT. II, 3~~

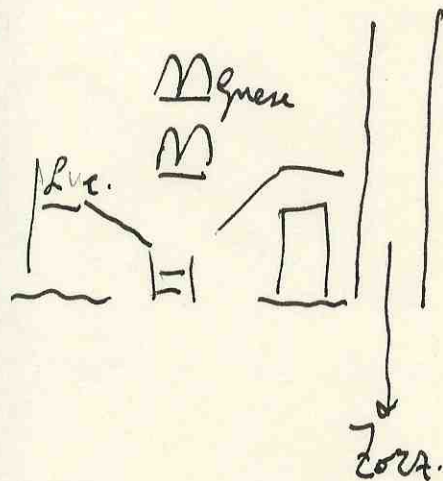
~~ATT. II, 3~~

TESTO corretto.

Luc. - Mafari!

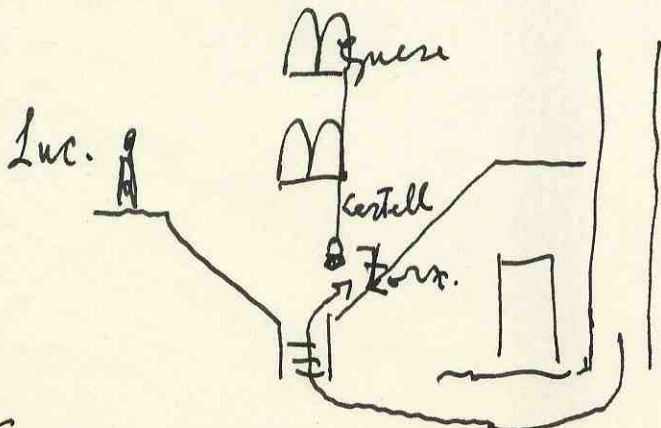
Gnese - Mandi a tuil.

Luc. - Forsetto!

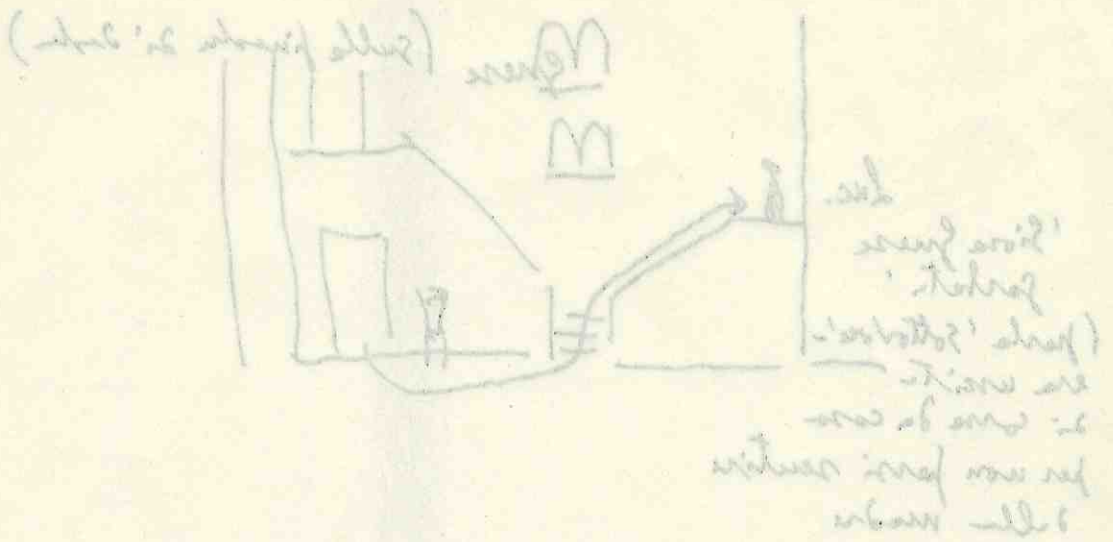


p. 40

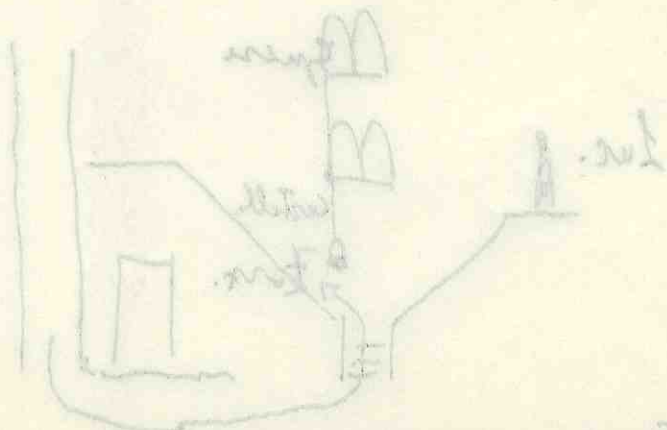
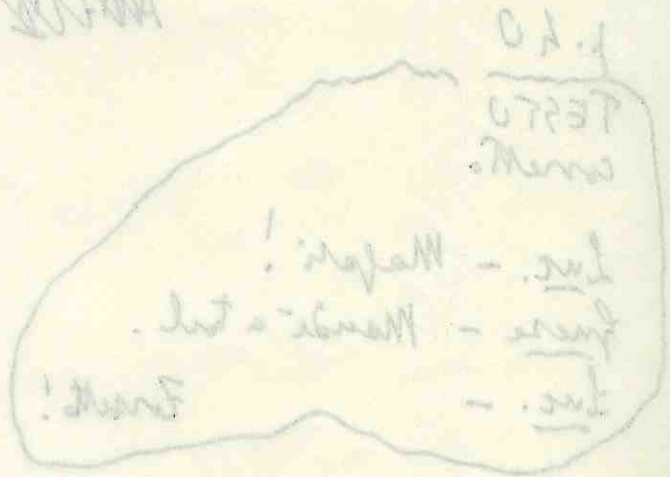
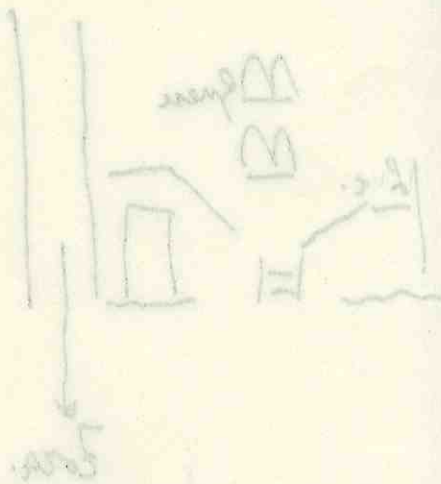
ATT. II, 4



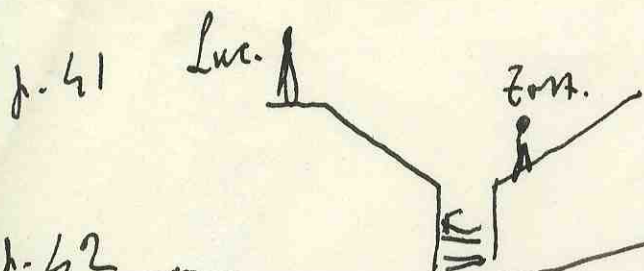
MAN TESTO CORRETTA



~~Handwritten scribbles~~



~~Handwritten scribbles~~



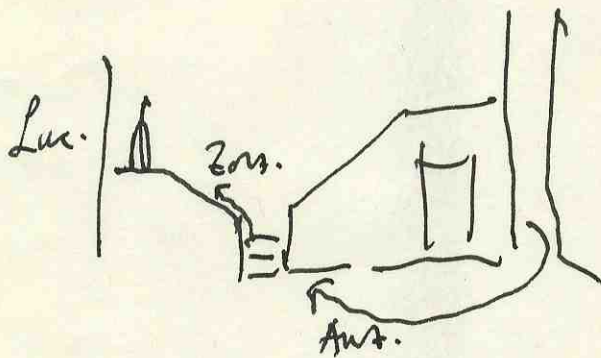
p. 42

TESTO CORRETTO : cancellate battute Luc. - Solus pampulup
~~Zort.~~ - ~~Vepus~~ -

Zort. dop 'Me fe una zottic cuca va'
 fe per salire → Luc. col fion
 e viene respuz da Aut.

p. 42

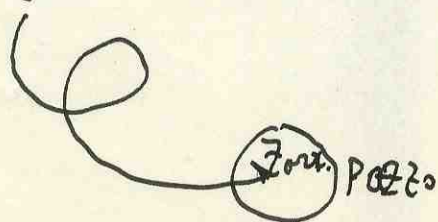
Att. II, 6



p. 43

Zort. fuppend. potrebbe salire sul pozzo

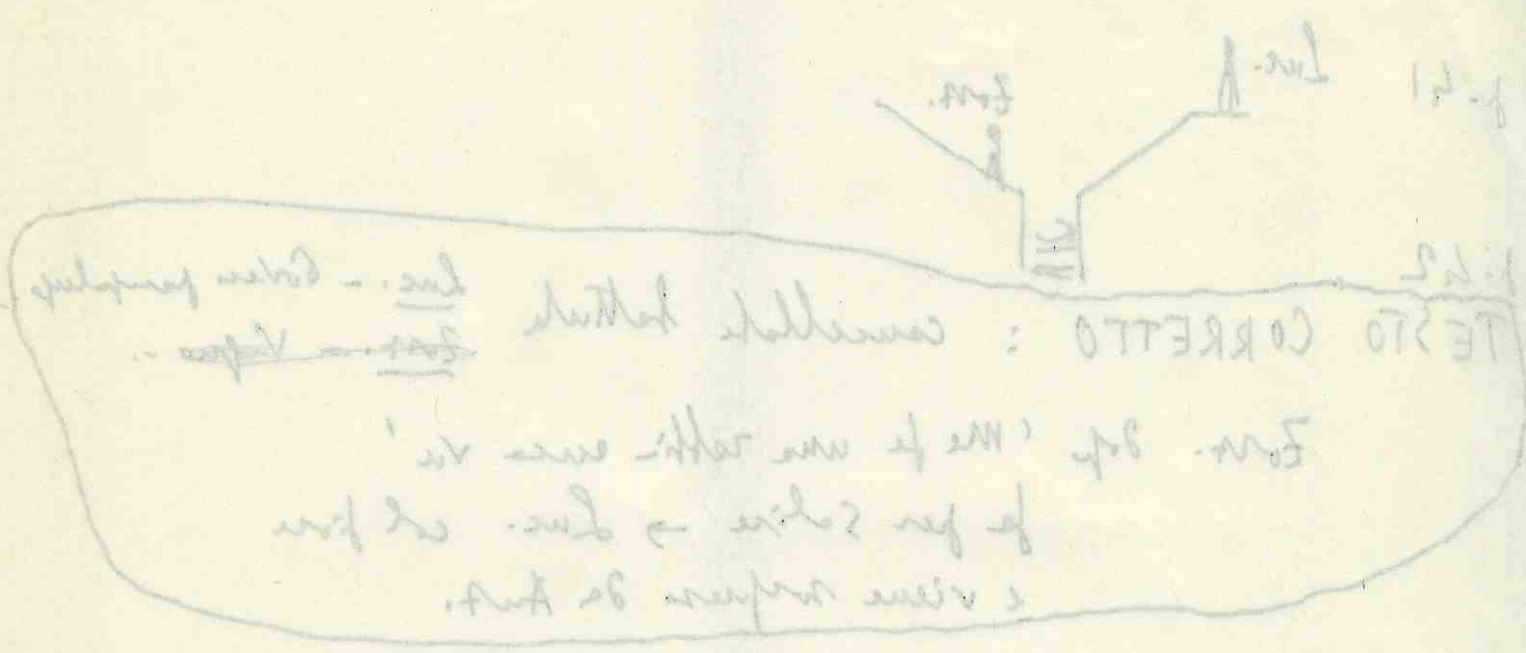
Zort. Aut.



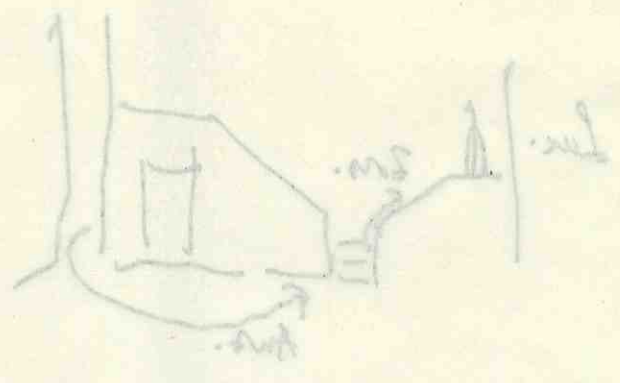
1^a battuta

Att. II, 2

2



Att. II, 2



Form. 24. Form. 24. Form. 24. Form. 24.

Form. 24

Form. 24

Form. 24

